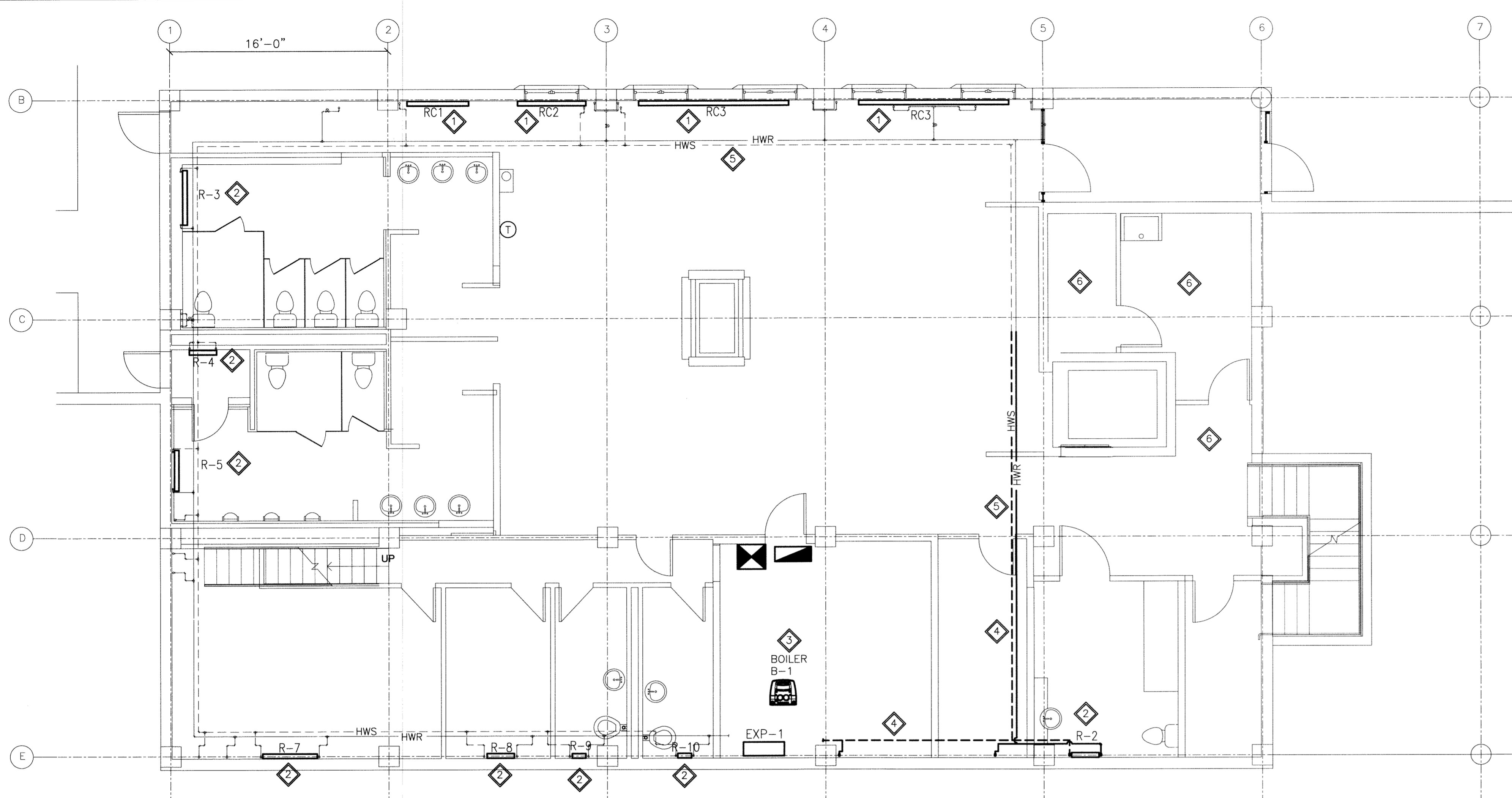
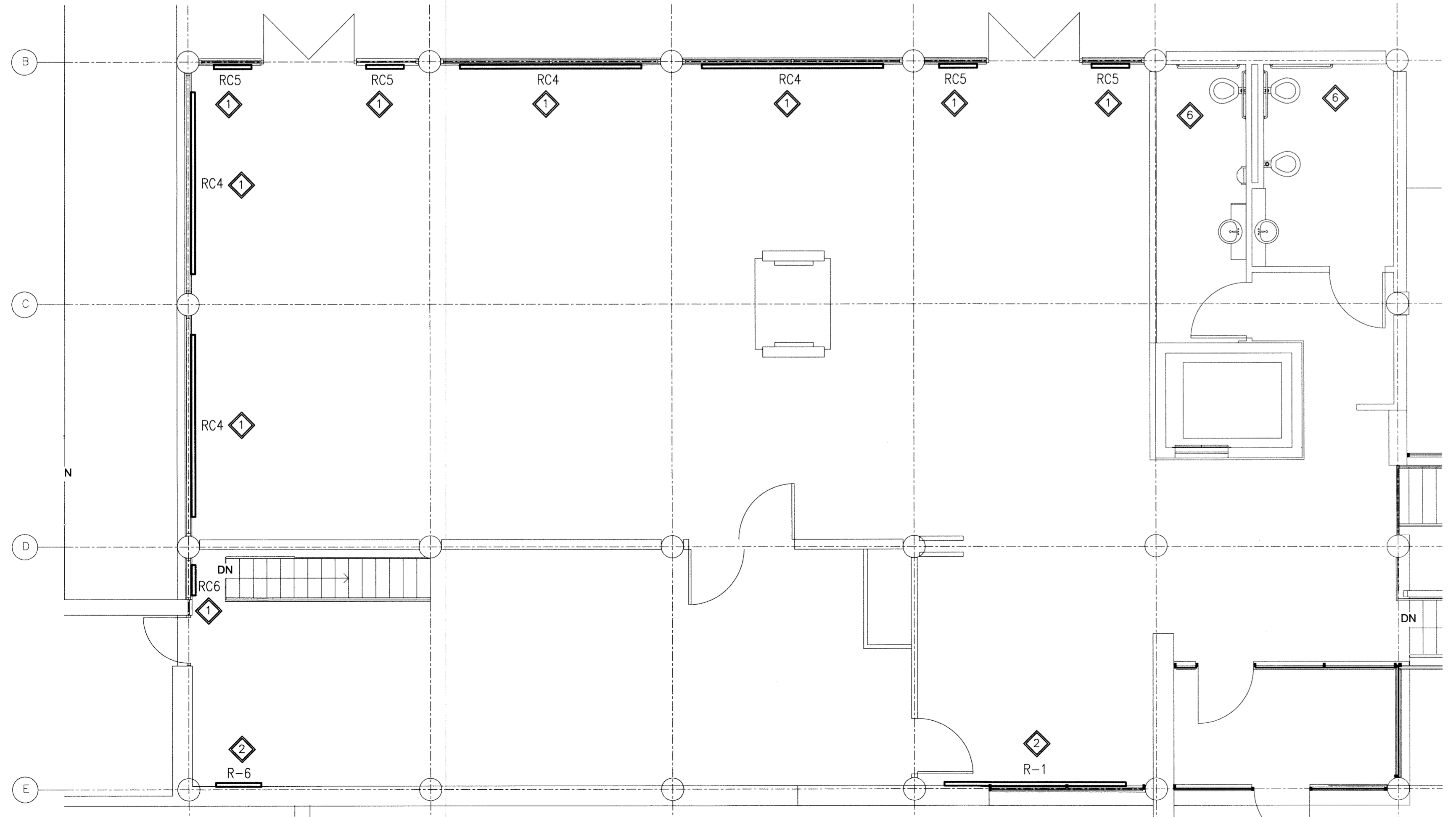


P:\Projects\2011\11-0902-04_M10.0-Rev.0.dwg - Tab: 24x36-11-0902-04_M10.0-Rev.0.dwg - Tab: 24x36-11-0902-04_M10.0-Rev.0.dwg - Mon 11/11/21 [Mon 11:25pm]



1 BASEMENT FLOOR PLAN - NEW HYDRONIC HEATING SYSTEM



1 MAIN FLOOR PLAN - NEW HYDRONIC HEATING SYSTEM

GENERAL NOTES:

1. PERFORM WORK IN ACCORDANCE WITH ALL APPLICABLE CODES AND REGULATIONS.
2. REVIEW EQUIPMENT LOCATIONS WITH CONSULTANT PRIOR TO INSTALLATION.
3. EQUIPMENT LOCATIONS, DUCT AND PIPE ROUTING INDICATED ON THE DRAWINGS IS APPROXIMATE ONLY. CONFIRM IN THE FIELD. REROUTE DUCTWORK AND PIPING AS REQUIRED TO ELIMINATE FIELD INTERFERENCES, WITH BUILDING STRUCTURES, ELECTRICAL, ETC. CONFIRM CHANGES WITH CONSULTANT. CO-ORDINATE WORK WITH ALL SUBTRADES, WHERE DIMENSIONS ARE INDICATED FOR PIPING, DUCTWORK, DUCT SIZES, EQUIPMENT SIZES, ETC. THESE ARE FOR BIDDING PURPOSES ONLY. THE CONTRACTOR IS RESPONSIBLE TO VERIFY ALL DIMENSIONS IN THE FIELD PRIOR TO ORDERING EQUIPMENT AND COMMENCING INSTALLATION WITHOUT EXTRA CHARGES TO THE PROJECT. THE CONTRACTOR IS RESPONSIBLE TO ENSURE ALL EQUIPMENT, DUCTWORK AND PIPING FITS IN THE SPACE AVAILABLE AND TO MAINTAIN THE GENERAL DESIGN INTENT FOR THE SYSTEMS.
4. CONFORM TO SMACNA STANDARDS FOR SUPPLY AND INSTALLATION OF DUCTWORK.
5. SEAL ALL WALL AND FLOOR PENETRATIONS WATER AND AIR TIGHT.
6. PROVIDE ALL WALL AND FLOOR PENETRATIONS.
7. DESIGN, SUPPLY, AND INSTALL NATURAL GAS PIPING TO NEW BOILER (B-1) AS PER CAN/CGA B149.1-M95.
8. ALL NEW AND MODIFIED RADIATOR ENCLOSURES SHALL BE PAINTED AS PER INTERIOR DESIGNER'S INSTRUCTIONS.
9. PROVIDE WALL HANGERS FOR RADIATOR ELEMENTS AS REQUIRED.
10. INCLUDE END CAPS ON NEW RADIATOR COVERS. EXTEND COVERS AS REQUIRED TO CONCEAL PIPE FITTINGS AND VALVES AND MAKE GOOD.
11. CONTROLS CONTRACTOR TO PROVIDE HVAC CONTROLS AS PER DRAWING M18.0.
12. ALL NEW HYDRONIC PIPING SHALL BE INSULATED WITH 1" THICK FIBREGLASS INSULATION C/W ASJ.

KEY NOTES:

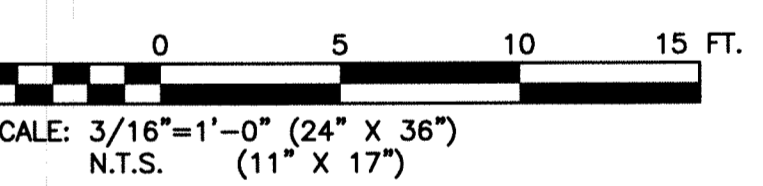
- 1 SUPPLY AND INSTALL NEW RADIATOR COVERS AS SPECIFIED. REFER TO RADIATOR SCHEDULE. REPLACE CONTROL VALVES AS INDICATED ON DRAWING M17.0.
- 2 SUPPLY AND INSTALL NEW RADIATOR INCLUDING ELEMENT, ENCLOSURE, CONTROL VALVES AND ASSOCIATED PIPING AS INDICATED ON DRAWING M17.0.
- 3 SUPPLY AND INSTALL NEW BOILER B-1 AND HYDRONIC PIPING SYSTEM AS INDICATED ON DRAWING M18.0.
- 4 PROVIDE NEW HYDRONIC PIPING AS INDICATED. REFER TO DRAWING M17.0 FOR PIPE SIZES. PROVIDE ALL WALL AND FLOOR PENETRATIONS.
- 5 HYDRONIC PIPING TO BE CONCEALED BY NEW ARCHITECTURAL BULKHEAD (BY OTHERS, CO-ORDINATE WITH STRUCTURAL TRADES TO PROVIDE ACCESS DOORS AT ALL CONTROL VALVES AND SHUTOFF VALVES.
- 6 REFER TO ELECTRICAL DRAWINGS FOR HEATERS IN THESE AREAS.

THIS DRAWING MUST NOT BE SCALED.
 THE GENERAL CONTRACTOR SHALL VERIFY ALL DIMENSIONS, DATUMS, AND LEVELS PRIOR TO COMMENCEMENT OF WORK. ALL ERRORS AND OMISSIONS TO BE REPORTED TO NUMBER TEN ARCHITECTURAL GROUP BEFORE PROCEEDING.
 VARIATIONS AND MODIFICATIONS TO WORK SHOWN ON THESE DRAWINGS SHALL NOT BE CARRIED OUT WITHOUT WRITTEN PERMISSION OF NUMBER TEN ARCHITECTURAL GROUP.

REVISED / ISSUED / PLOTTED	DATE
Rev. 0 - ISSUED FOR TENDER	NOVEMBER 21/2011

LEGEND:

- NEW EQUIPMENT OR DUCTWORK
- EXISTING EQUIPMENT OR DUCTWORK
- - - CONTROL WIRING
- HWS — HOT WATER SUPPLY
- HWR — HOT WATER RETURN
- EF — EXHAUST FAN
- B — BOILER
- UH — UNIT HEATER
- HWT — HOT WATER TANK
- R — RADIATOR
- RC — RADIATOR COVER (C/W EXISTING RADIATOR ELEMENT)
- EXP — EXPANSION TANK
- ⊠ → SUPPLY AIR
- ← ⊠ ← RETURN AIR
- → EXHAUST AIR
- (B) — BALANCE DAMPER
- (T) — THERMOSTAT
- (BD) — BACKDRAFT DAMPER
- (P) — PRESSURE SENSOR
- G1 — GRILLE NO.
- 8"Ø — NECK SIZE
- 160 CFM — AIR FLOW
- L1 — LOUVRE NO.
- 12"x12" — LOUVRE SIZE
- 160 CFM — AIR FLOW @ 500 FPM



RADIATOR SCHEDULE							
No.	TYPE	SIZE			OUTPUT MBH (@ 190° F WATER)	MAKE/MODEL	NOTES
		L	H	D			
NEW RADIATORS:							
R-1	RADIATOR ELEMENT AND COVER	12'-0"	6"	11"	29.5	SIGMA/44C075 ELEMENT AND FST-06P2T COVER	TOP OUTLET, DOUBLE ROW ELEMENT, 3/4" COPPER TUBE, 4"x4" FINS, 48 FINS/FOOT
R-2	RADIATOR ELEMENT AND COVER	2'-0"	24"	5 1/4"	3.2	SIGMA/44C075 ELEMENT AND SWE-24T COVER	TOP OUTLET, SINGLE ROW ELEMENT, 3/4" COPPER TUBE, 4"x4" FINS, 48 FINS/FOOT
R-3	RADIATOR ELEMENT AND COVER	4'-0"	24"	5 1/4"	6.2	SIGMA/44C075 ELEMENT AND SWE-24T COVER	TOP OUTLET, SINGLE ROW ELEMENT, 3/4" COPPER TUBE, 4"x4" FINS, 48 FINS/FOOT
R-4	RADIATOR ELEMENT AND COVER	2'-0"	24"	5 1/4"	3.2	SIGMA/44C075 ELEMENT AND SWE-24T COVER	TOP OUTLET, SINGLE ROW ELEMENT, 3/4" COPPER TUBE, 4"x4" FINS, 48 FINS/FOOT
R-5	RADIATOR ELEMENT AND COVER	3'-0"	24"	5 1/4"	4.7	SIGMA/44C075 ELEMENT AND SWE-24T COVER	TOP OUTLET, SINGLE ROW ELEMENT, 3/4" COPPER TUBE, 4"x4" FINS, 48 FINS/FOOT
R-6	RADIATOR ELEMENT AND COVER	3'-0"	24"	5 1/4"	4.7	SIGMA/44C075 ELEMENT AND SWE-24T COVER	TOP OUTLET, SINGLE ROW ELEMENT, 3/4" COPPER TUBE, 4"x4" FINS, 48 FINS/FOOT
R-7	RADIATOR ELEMENT AND COVER	4'-0"	24"	5 1/4"	6.2	SIGMA/44C075 ELEMENT AND SWE-24T COVER	TOP OUTLET, SINGLE ROW ELEMENT, 3/4" COPPER TUBE, 4"x4" FINS, 48 FINS/FOOT
R-8	RADIATOR ELEMENT AND COVER	2'-0"	24"	5 1/4"	3.2	SIGMA/44C075 ELEMENT AND SWE-24T COVER	TOP OUTLET, SINGLE ROW ELEMENT, 3/4" COPPER TUBE, 4"x4" FINS, 48 FINS/FOOT
R-9	RADIATOR ELEMENT AND COVER	1'-0"	24"	5 1/4"	1.5	SIGMA/44C075 ELEMENT AND SWE-24T COVER	TOP OUTLET, SINGLE ROW ELEMENT, 3/4" COPPER TUBE, 4"x4" FINS, 48 FINS/FOOT
R-10	RADIATOR ELEMENT AND COVER	1'-0"	24"	5 1/4"	1.5	SIGMA/44C075 ELEMENT AND SWE-24T COVER	TOP OUTLET, SINGLE ROW ELEMENT, 3/4" COPPER TUBE, 4"x4" FINS, 48 FINS/FOOT
EXISTING RADIATORS:							
RC1	RADIATOR COVER	4'-6"	12"	5-1/4"	6.4	SIGMA/SWE-12T	TOP OUTLET, EXISTING SINGLE ROW ELEMENT, 1 1/4" COPPER TUBE, 4 1/4"x4 1/4" FINS, 40 FINS/FT.
RC2	RADIATOR COVER	5'-0"	12"	5-1/4"	7.1	SIGMA/SWE-12T	TOP OUTLET, EXISTING SINGLE ROW ELEMENT, 1 1/4" COPPER TUBE, 4 1/4"x4 1/4" FINS, 40 FINS/FT.
RC3	RADIATOR COVER	11'-0"	12"	5-1/4"	15.6	SIGMA/SWE-12T	TOP OUTLET, EXISTING SINGLE ROW ELEMENT, 1 1/4" COPPER TUBE, 4 1/4"x4 1/4" FINS, 40 FINS/FT.
RC4	RADIATOR COVER	12'-0"	6"	11"	21.1	SIGMA/FST-06P2T	TOP OUTLET, PEDESTAL BASE, EXISTING DOUBLE ROW ELEMENT, 1 1/4" COPPER TUBE, 3 1/4"x3 1/4" FINS, 40 FINS/FT.
RC5	RADIATOR COVER	2'-6"	6"	11"	4.4	SIGMA/FST-06P2T	TOP OUTLET, PEDESTAL BASE, EXISTING DOUBLE ROW ELEMENT, 1 1/4" COPPER TUBE, 3 1/4"x3 1/4" FINS, 40 FINS/FT.
RC6	RADIATOR COVER	2'-0"	10"	5 1/4"	1.8	SIGMA/SWE-10TF	FLOOR MOUNTED, TOP OUTLET FRONT INLET, EXISTING SINGLE ROW ELEMENT, 1 1/4" COPPER TUBE, 3 1/4" x3 1/4" FINS, 40 FINS/FT.

SCALE VERIFIED BY: *cpw*

numberTEN
 architectural group
 winnipeg MB regina SK victoria BC
 204 942.0981 306 721.5011 250 360.2166

architecture • interior design • graphic design

PEGUIS PAVILION
 UPGRADES & ENTRY ADDITION
 BIDDING #913-2011

project
BASEMENT AND MAIN FLOOR PLAN
 HYDRONIC PIPING - NEW

sheet title
KGS GROUP CONSULTING ENGINEERS

consultant

scale: 3/16"=1'-0"
 date: August 15, 2011
 sheet no. **M10.0**